

Making the
Super Duty,
Super again.



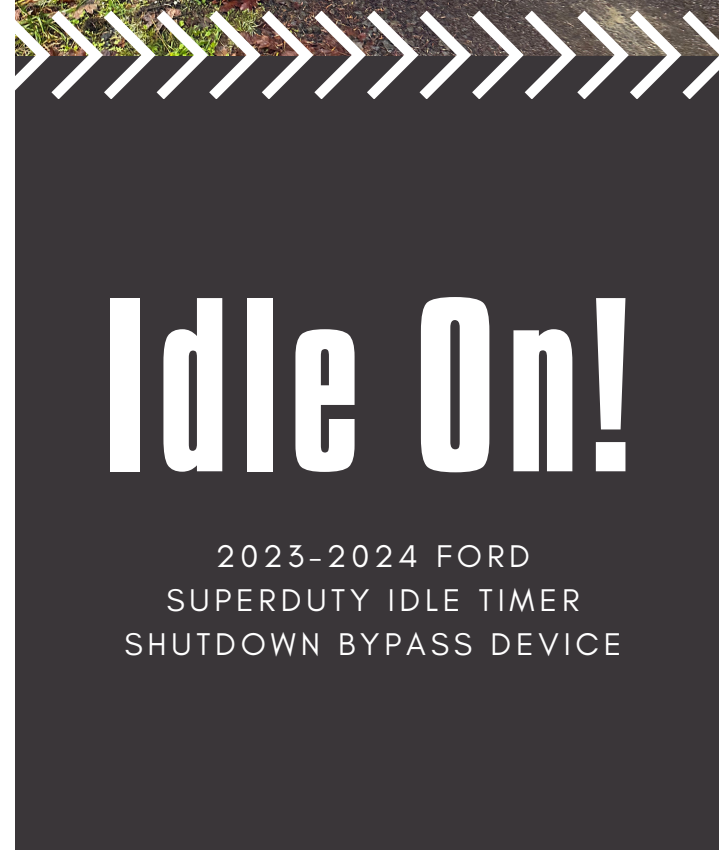
Idle On!

PROUDLY DESIGNED AND
MANUFACTURED
BY FIRST RESPONDERS FOR
FIRST RESPONDERS
AT MERLIN'S FAB IN
CORVALLIS, OR. U.S.A.

CONTACT

TO CONTACT US
OR TO PLACE AN ORDER:

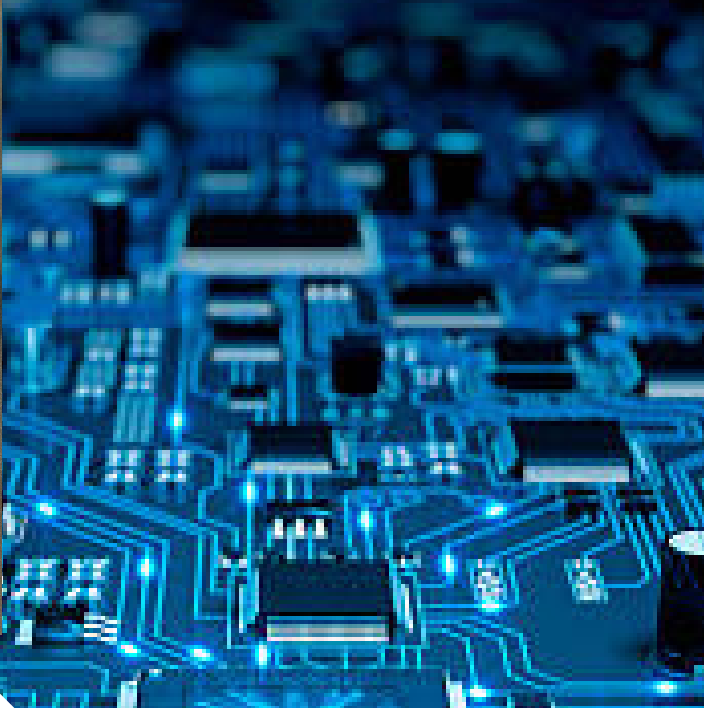
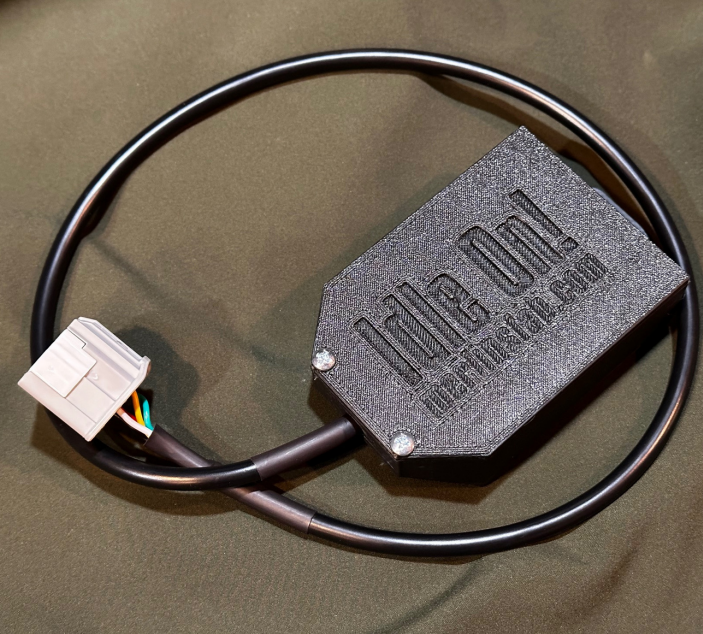
WWW.MERLINSFAB.COM
SHOP@MERLINSFAB.COM
541.760.7976



Idle On!

2023-2024 FORD
SUPERDUTY IDLE TIMER
SHUTDOWN BYPASS DEVICE





30 MINUTE IDLE TIME PROBLEM

New Ford Super Duty pickups will only allow the vehicle to idle a maximum of 30 minutes at which point it shuts off. Even Ford dealerships admit they cannot "Fix" this, or re-program the on-board computer to allow longer idle times.



PRICING

- The Idle On! is offered in *three* options:
- **\$200** - Idle On circuit that you wire in to factory upfitters pigtail included in all Super Duty's, (5 wires to connect.)
 - **\$325** - Idle On! Plug-n-Play circuit pre-wired with a factory connector, all ready to go.

SOLUTION

Our Idle On! Circuit is a simple device that utilizes the factory upfitters wiring harness and basically fools the onboard computer and tells it to disable the idle shutdown feature. This device works with all gas or diesel F-250 thru F-550, is non-destructive and will not void your factory warranty

Who does this effect?

Anyone who needs their vehicle to stay running to power lights, testing equipment, heating/cooling, etc. law enforcement, fire, utility workers, roadside inspection, K9 units, communications equipment and the list goes on of industries that need to run their vehicle longer than 30 minutes.